



FABRIC OPTIONS

UPDATED 11 09 22



1 BRESLOW | SNOW



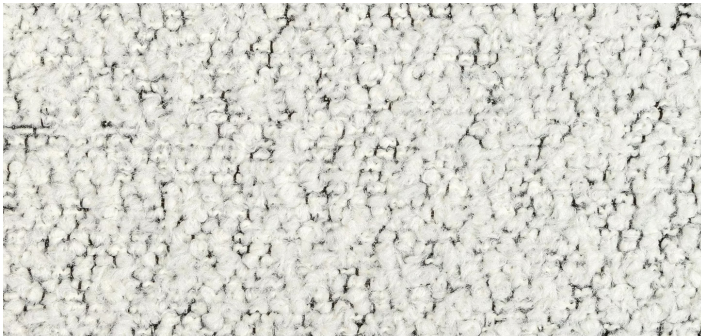
2 LUNE | SALT



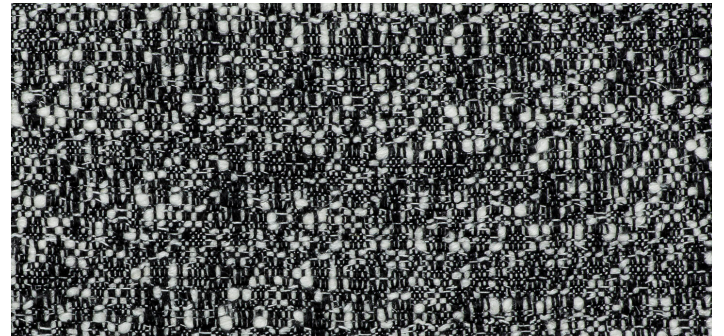
3 CLASSIC BOUCLÉ | PEARL



4 NAMASTE | SUGAR



5 NAMASTE | WHITE & BLACK



6 ZANZIBAR | GRAVIER



7 GRAFFITO | ONYX & BEIGE



8 WOKABI | NOIR





9 TAKE DIRECTION | ALMOND



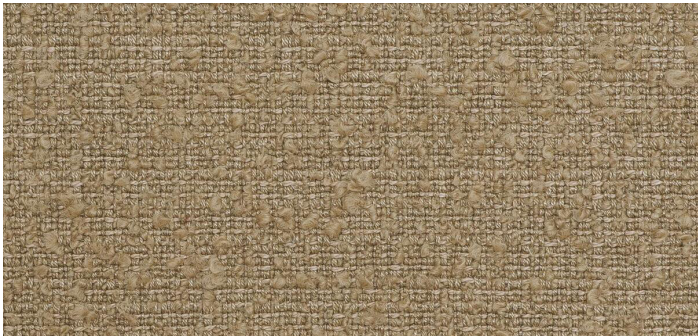
10 GRAFFITO | LINEN & ONYX



11 WHITMAN | SESAME



12 SKYE WOOL | FLAX



13 MIES | BEIGE



14 WALK ABOUT | ANTHRACITE



15 FAVILA | MARRON

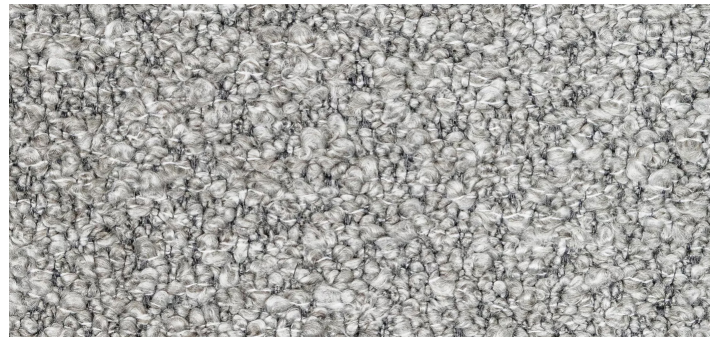


16 CRESCENDO | IVORY & EBONY

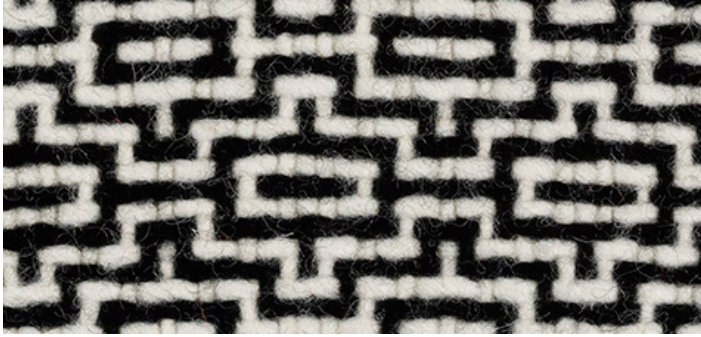




17 CHEVALIER WOOL | ASH



18 FRIZZLE | DOVE



19 ITA | BLACK & WHITE



20 JEFFERSON WOOL | KOALA



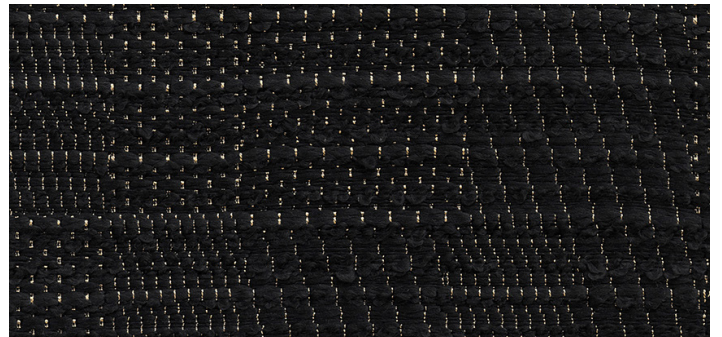
21 JEFFERSON WOOL | JET



22 NAGANO | INK

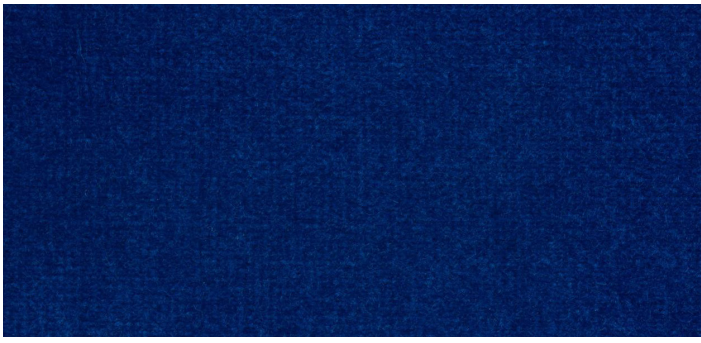


23 NAMASTE | GALAXY



24 PATCHWORK | BLACK

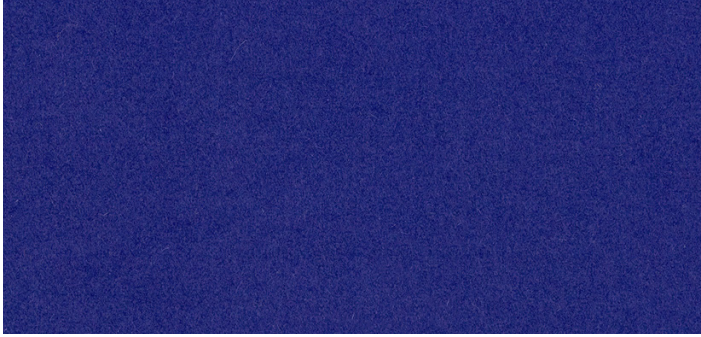




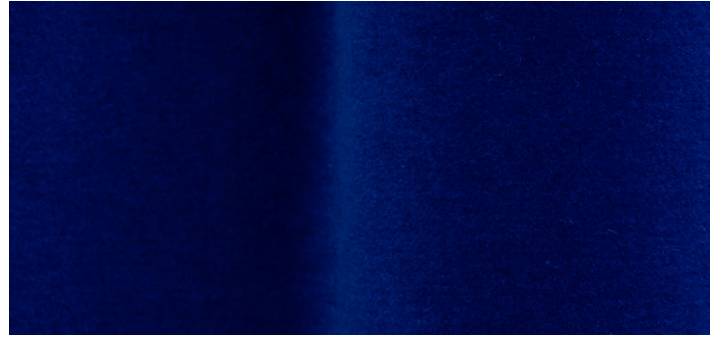
25 AQUA VELVET | GREEK ISLANDS



26 SMART | COBALT



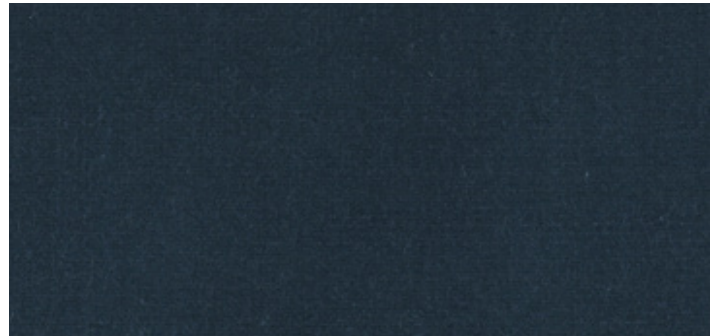
27 GEMMA | RAINWATER



28 ST GERMAIN | ELECTRIC

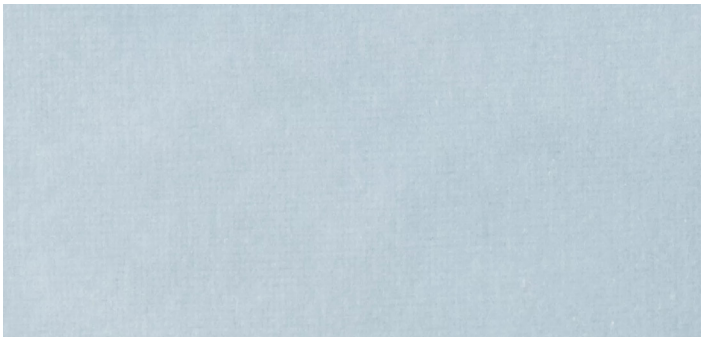


29 JEFFERSON WOOL | INK

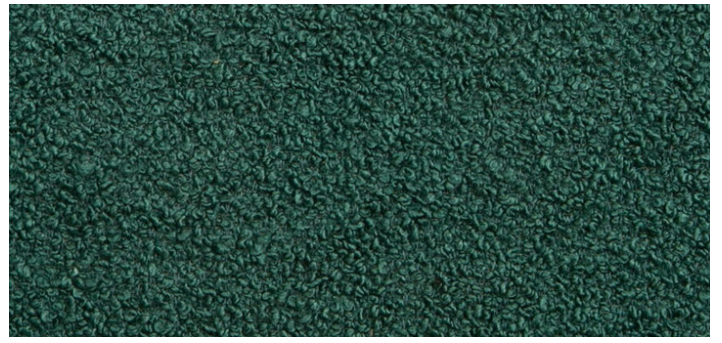


30 CALAIS | DEEP NAVY





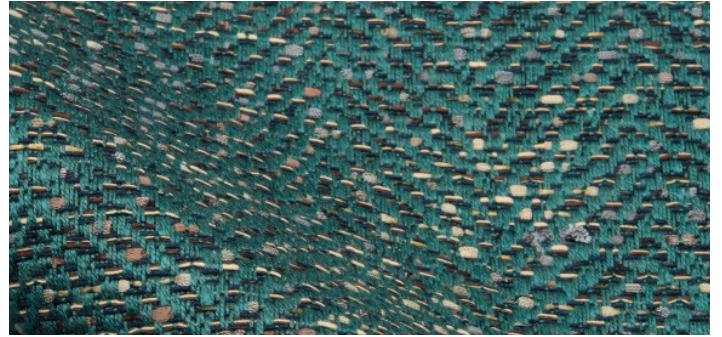
31 VERSAILLES | SKY



32 NAGANO | TEAL



33 GRAFFITO | TEAL & PEARL



34 LOUXOR | TEAL



35 SOUTHERN CHARM | LAGOON



36 VLADIMIRO | PETROLIO



37 TEDDY | MINT



38 SKYE WOOL | MINT





49 CHIC | HARMONY



40 SKY WOOL | SPROUT



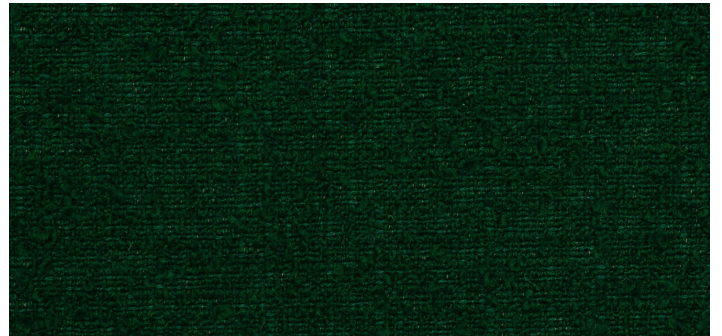
41 JEFFERSON WOOL | BOTTLE



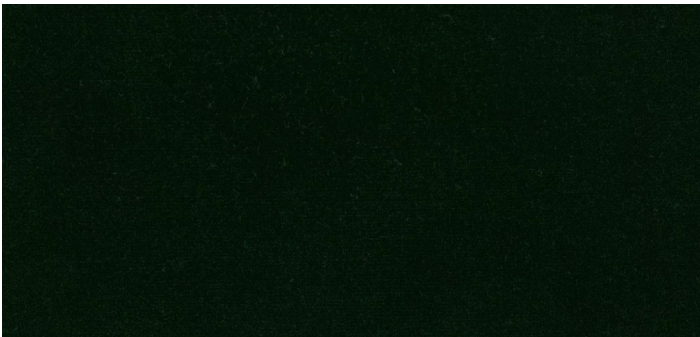
42 TYRONE | HERBAL GREEN



43 SAVOY SUITING | HUNTER



44 MIES | JARDIN

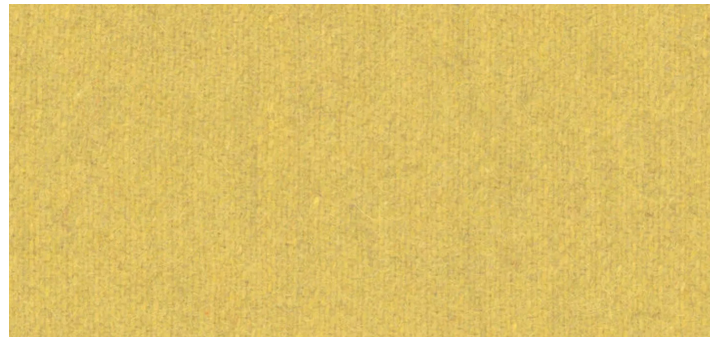


45 ETERNAL | FOREST





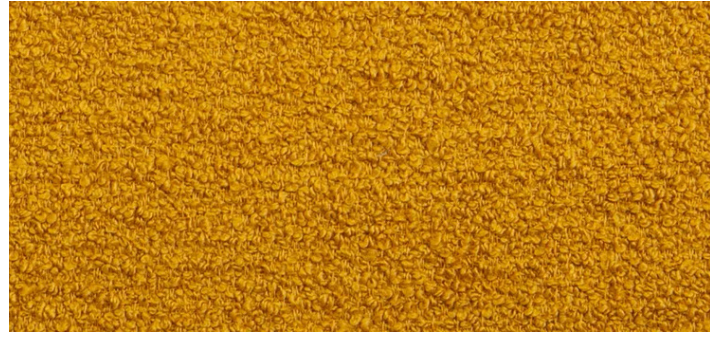
46 VLADIMIRO | SOUFRE



47 SKYE WOOL | GOLDENROD



48 TAKE DIRECTION | MUSTARD



49 NAGANO | KABOCHA



50 BAIKAL | HONEY

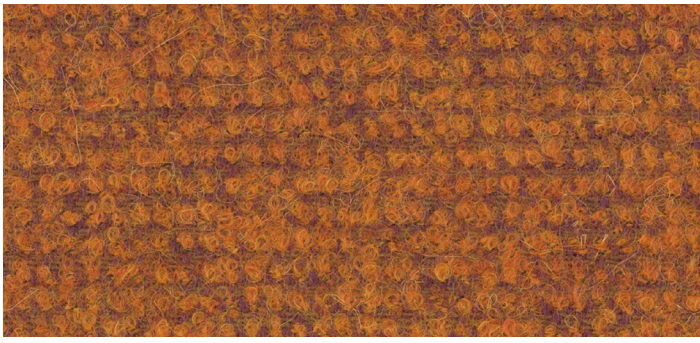


51 SWEET HEART | FAUVE



52 SMART | AMBER





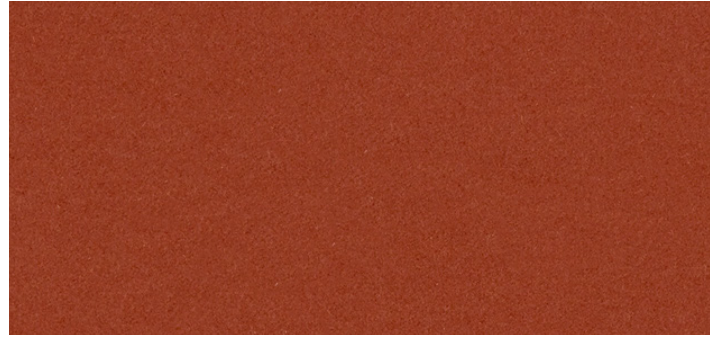
53 CHIC | BITTERSWEET



54 BURLINGTON | ROSE



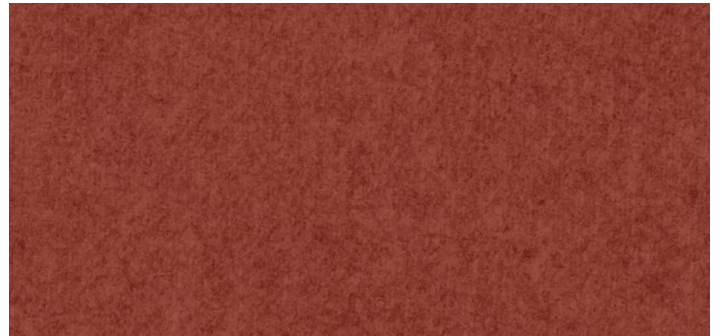
55 LUIGI | FRAISE



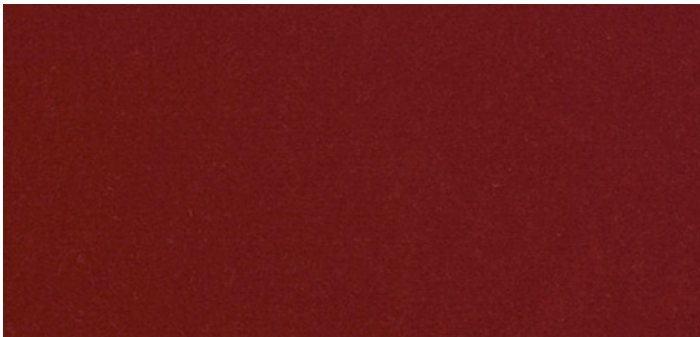
56 GEMMA | CARMINE



57 CLASSIC BOUCLÉ | CAYENNE



58 JEFFERSON WOOL | MAPLE

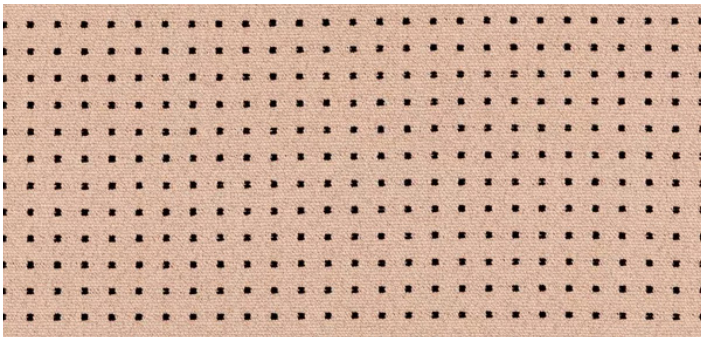


59 AMORE | LUST



60 TYRONE | SALMON BROWN





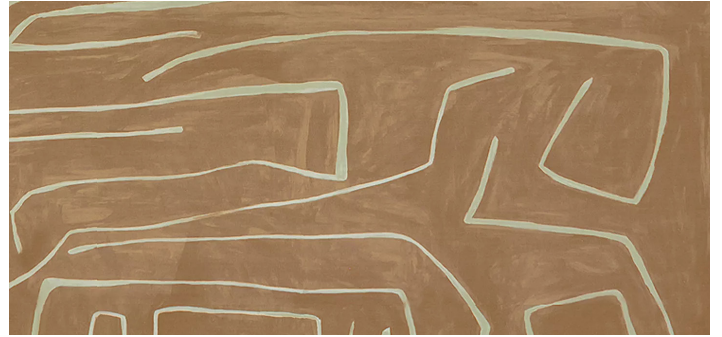
61 TELLUS | BLUSH



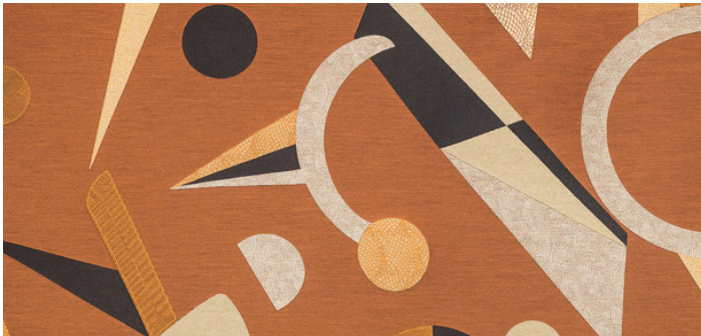
62 LIMANI | AMBER



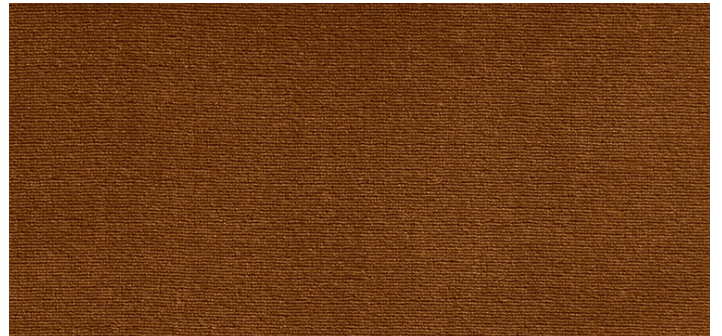
63 CHEVALIER WOOL | BURNT SIENNA



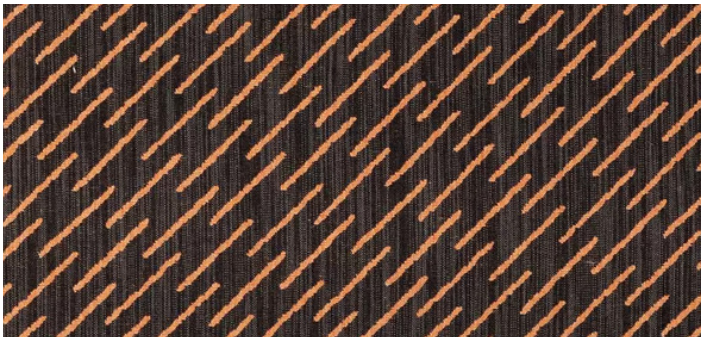
64 GRAFFITO | SALMON & CREAM



65 MANIFESTO FUTURISTA | CUIVRE

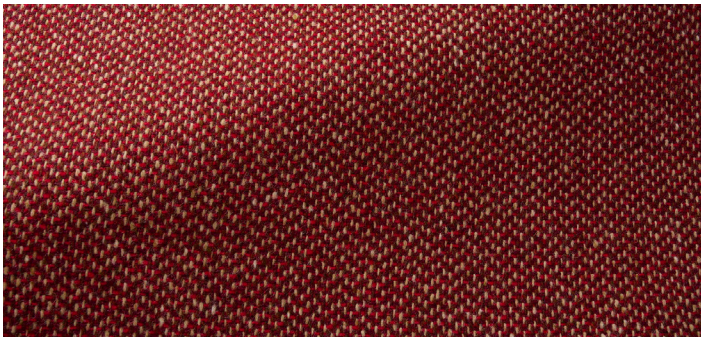


66 SANSONE | HAVANE



67 ESKER WEAVE | SORBET & STONE





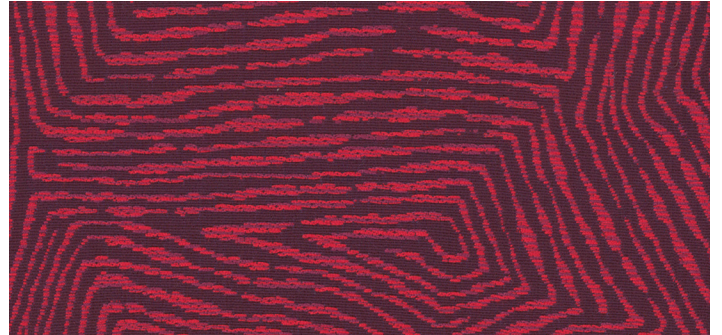
68 TYRONE | ROUGE



69 LUIGI | CERISE



70 GEMMA | EARNEST



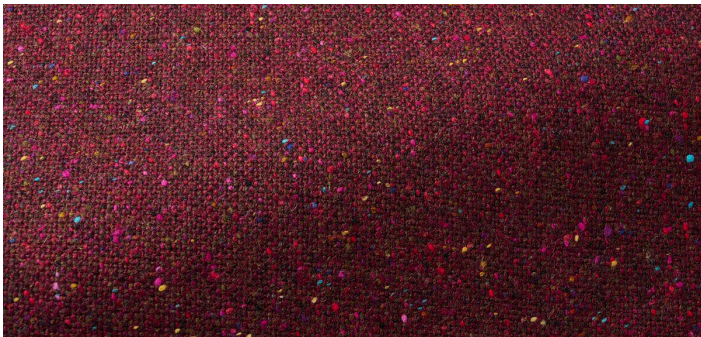
71 IMPRINT | CARMINE



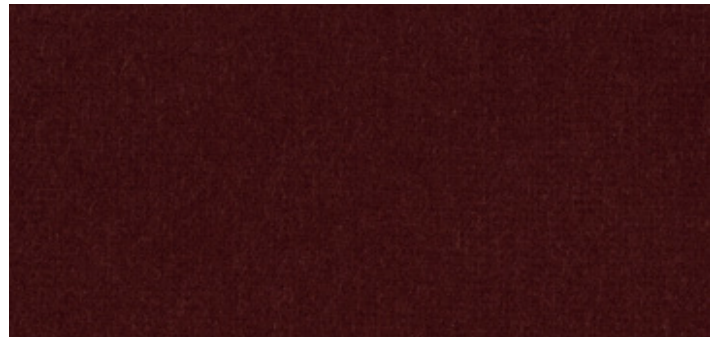
72 PRINCE HAIRY | BURGUNDY



73 TAKE DIRECTION | DEEP RASPBERRY

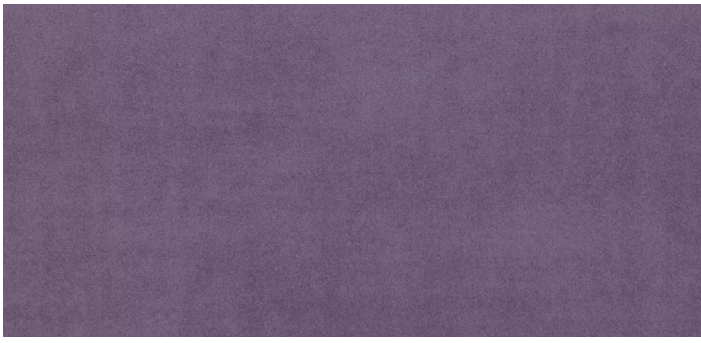


74 TARA | DAMSON

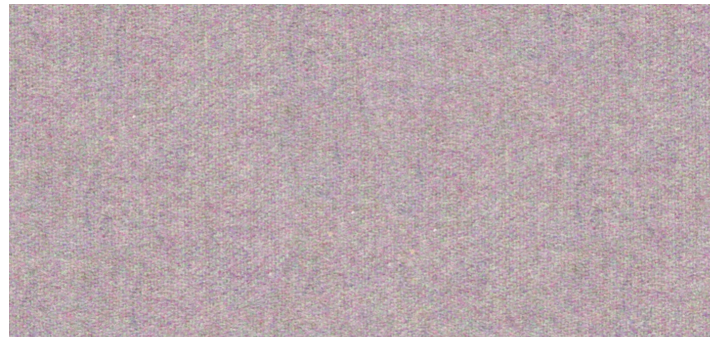


75 CALAIS | GARNET

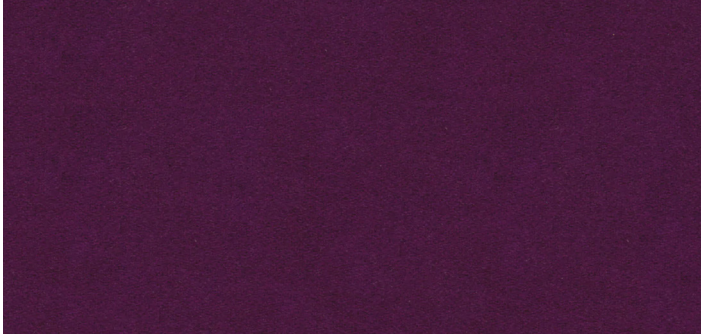




76 ALVAR | LAVENDER



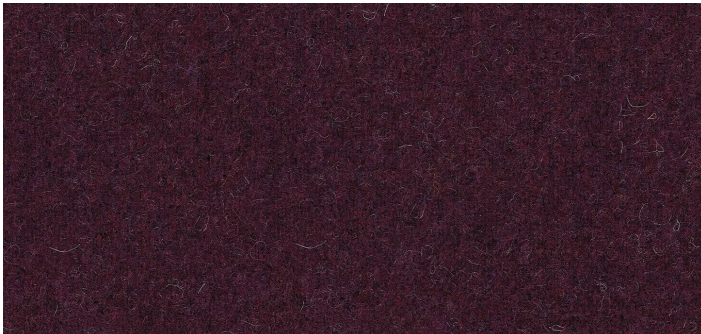
77 COUTURE | LAVENDER



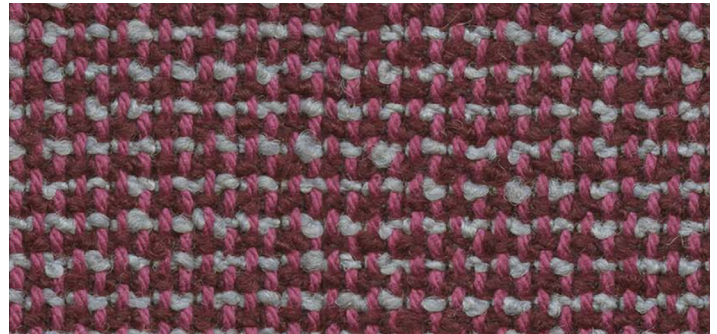
78 CHEVALIER WOOL | VIOLET



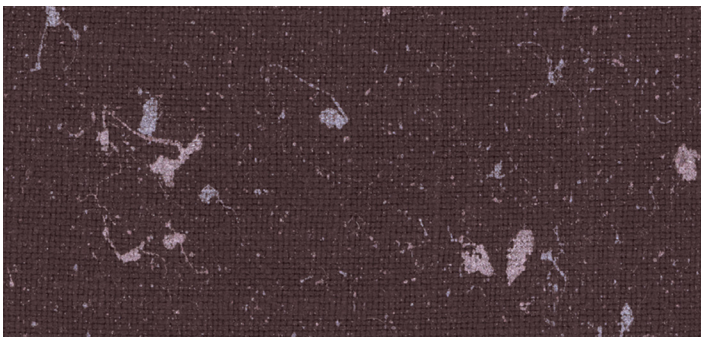
79 DUCHESS | LYNX



80 SKYE WOOL | AUBERGINE



81 SEURAT | CIRCUS



82 ALL STAR | PLUM



1	<b>BRESLOW, SNOW</b> 2014129/101  FABRIC TYPE - CONTENT - COTTON 47, MERCERIZED COTTON 30, RAYON 23  DESIGNER - JAMES HUNIFORD GRADE - B ABRASION - 30,000	2	<b>LUNE, SALT</b> GWF-3767/1  FABRIC TYPE - CONTENT - VISCOSE 32, POLYACRYLIC 25, LINEN 13, COTTON 13, WOOL 9, POLYAMIDE 8  DESIGNER - KELLY WEARSTLER GRADE - C ABRASION - 40,000	3	<b>CLASSIC BOUCLÉ, PEARL</b> K162/1  FABRIC TYPE - BOUCLÉ CONTENT - WOOL 25, NYLON 48  DESIGNER - GRADE - B ABRASION - 40,000
4	<b>NAMASTE, SUGAR</b> 36388/1  FABRIC TYPE - BOUCLÉ CONTENT - POLYESTER 65, CELLIANT 35  DESIGNER - GRADE - B ABRASION - 100,000+	5	<b>NAMASTE, WHITE &amp; BLACK</b> 36388/121  FABRIC TYPE - BOUCLÉ CONTENT - POLYESTER 65, CELLIANT 35  DESIGNER - GRADE - B ABRASION - 100,000+	6	<b>ZANZIBAR, GRAVIER</b> 71313/012  FABRIC TYPE - CONTENT - LINEN 73, WOOL 22, POLYESTER 5  DESIGNER - GRADE - D ABRASION - 25,000
7	<b>GRAFFITO, ONYX &amp; BEIGE</b> GWF-3530/816  FABRIC TYPE - PRINTED CONTENT - COTTON 52, LINEN 48  DESIGNER - KELLY WEARSTLER GRADE - B ABRASION -	8	<b>WOKABI, NOIR</b> F3355/002  FABRIC TYPE - EMBROIDERED CONTENT - COTTON 80, ACRYLIC 20  DESIGNER - GRADE - D ABRASION -	9	<b>TAKE DIRECTION, ALMOND</b> 4800/30  FABRIC TYPE - MOHAIR CONTENT - PILE: MOHAIR 100 GROUND: MOHAIR 50, COTTON 50  DESIGNER - GRADE - D ABRASION - 25,000
10	<b>GRAFFITO, LINEN &amp; ONYX</b> GWF-3530/18  FABRIC TYPE - PRINTED CONTENT - COTTON 52, LINEN 48  DESIGNER - KELLY WEARSTLER GRADE - B ABRASION -	11	<b>WHITMAN, SESAME</b> K1377/1  FABRIC TYPE - CONTENT - PURE NEW WOOL 78, VIS- COSE 18, NYLON 4  DESIGNER - RODARTE GRADE - D ABRASION -	12	<b>SKYE WOOL, FLAX</b> 2017118/1116  FABRIC TYPE - WOOL CONTENT - WOOL 70, POLYESTER 20, NYLON 5  DESIGNER - GRADE - A ABRASION - 100,000+
13	<b>MIES, BEIGE</b> 71360/003  FABRIC TYPE - BOUCLÉ CONTENT - COTTON 32, WOOL 30, VISCOSE 18, LINEN 16  DESIGNER - GRADE - C ABRASION - 30,000	14	<b>WALK ABOUT, ANTHRACITE</b> 34876-1621  FABRIC TYPE - WOVEN CONTENT - COTTON 30, POLYESTER 22, VISCOSE 20, ACRYLIC 14, LINEN 7, POLYAMIDE 4, WOOL 3  DESIGNER - GRADE - C ABRASION - 38,000	15	<b>FAVILA, MARRON</b> LCT1004/001  FABRIC TYPE - WOVEN CONTENT - COTTON 23, ACRYLIC 16, VISCOSE 13, POLYAMIDE 12, WOOL 7  DESIGNER - GASTÓN Y DANIELA GRADE - D ABRASION - 30,000
16	<b>CRESCENDO, IVORY &amp; EBONY</b> GWF-3734/18  FABRIC TYPE - JACQUARD CONTENT - VISCOSE 47, COTTON 25, POLYESTER 16, LINEN 12  DESIGNER - KELLY WEARSTLER GRADE - B ABRASION - 32,000	17	<b>CHEVALIER WOOL, ASH</b> 8013149/1611  FABRIC TYPE - WOOL CONTENT - WOOL 80, POLYAMIDE 20  DESIGNER - GRADE - B ABRASION - 80,000	18	<b>FRIZZLE, DOVE</b> 6021111/21  FABRIC TYPE - BOUCLÉ CONTENT - ACRYLIC 75, POLYESTER 25  DESIGNER - GRADE - B ABRASION - 135,000



19	<b>ITA, BLACK WHITE</b> K1930/4  FABRIC TYPE - WOVEN CONTENT - WOOL 100  DESIGNER - MARIA CORNEJO GRADE - D ABRASION - 40,000+	20	<b>JEFFERSON WOOL, KOALA</b> 34397/2111  FABRIC TYPE - WOOL CONTENT - WOOL 70, POLYESTER 20, NYLON 5, ACRYLIC 5  DESIGNER - GRADE - A ABRASION - 100,000+	21	<b>JEFFERSON WOOL, JET</b> 34397/8  FABRIC TYPE - WOOL CONTENT - WOOL 70, POLYESTER 20, NYLON 5, ACRYLIC 5  DESIGNER - GRADE - A ABRASION - 100,000+
22	<b>NAMASTE, GALAXY</b> 36388/816  FABRIC TYPE - BOUCLÉ CONTENT - POLYESTER 65, CELLIANT 35  DESIGNER - GRADE - B ABRASION - 100,000+	23	<b>NAGANO, INK</b> 9975/09  FABRIC TYPE - BOUCLÉ CONTENT - WOOL 28, POLYESTER 27, ACRYLIC 24, COTTON 18, NYLON 5  DESIGNER - GRADE - C ABRASION - 45,000	24	<b>PATCHWORK, BLACK</b> T1701300/006  FABRIC TYPE - WOVEN CONTENT - POLYESTER 100  DESIGNER - GRADE - C ABRASION - 50,000
25	<b>AQUA VELVET, GREEK ISLANDS</b> 350/14  FABRIC TYPE - VELVET CONTENT - SOLUTION DYED ACRYLIC 100  DESIGNER - GRADE - B ABRASION - 100,000	26	<b>SMART, COBALT</b> 36110/55  FABRIC TYPE - WOOL CONTENT - POLYESTER 100  DESIGNER - GRADE - A ABRASION - 50,000	27	<b>GEMMA, RAINWATER</b> 466568/044  FABRIC TYPE - WOOL CONTENT - WOOL 85, NYLON 15  DESIGNER - SANDER LAK GRADE - A ABRASION - 100,000
28	<b>ST GERMAIN, ELECTRIC</b> 71221/056 FABRIC TYPE - VELVET CONTENT - COTTON 100  DESIGNER - GRADE - C ABRASION - 115,000	29	<b>JEFFERSON WOOL, INK</b> 34397/50  FABRIC TYPE - WOOL CONTENT - WOOL 70, POLYESTER 20, NYLON 5, ACRYLIC 5  DESIGNER - GRADE - A ABRASION - 100,000+	30	<b>CALAIS, DEEP NAVY</b> K787/5  FABRIC TYPE - VELVET CONTENT - PILE: COTTON 100 GROUND: COTTON 88, RAYON 12  DESIGNER - GRADE - B ABRASION - 30,000
31	<b>VERSAILLES, SKY</b> E25163/  FABRIC TYPE - VELVET CONTENT - PILE: COTTON 100 GROUND: COTTON 50, VISCOSE 50  DESIGNER - GRADE - B ABRASION - 40,000	32	<b>NAGANO, TEAL</b> 9975/07  FABRIC TYPE - BOUCLÉ CONTENT - WOOL 28, POLYESTER 27, ACRYLIC 24, COTTON 18, NYLON 5  DESIGNER - GRADE - C ABRASION - 45,000	33	<b>GRAFFITO, TEAL &amp; PEARL</b> GWF-3530/53  FABRIC TYPE - PRINTED CONTENT - COTTON 52, LINEN 48  DESIGNER - KELLY WEARSTLER GRADE - B ABRASION -
34	<b>LOUXOR, TEAL</b> 10780/67  FABRIC TYPE - WOVEN CONTENT - COTTON 42, VISCOSE 29, LINEN 17, POLYESTER 12  DESIGNER - GRADE - C ABRASION - 45,000	35	<b>SOUTHERN CHARM, LAGOON</b> 1135/10  FABRIC TYPE - WOVEN CONTENT - VISCOSE 45, COTTON 30, POLYESTER 25  DESIGNER - GRADE - B ABRASION - 40,000	36	<b>VLADIMIRO, PETROLIO</b> T21038/024  FABRIC TYPE - MOHAIR CONTENT - PILE: KID MOHAIR 100 GROUND: MOHAIR 62, COTTON 38  DESIGNER - GRADE - D ABRASION - 80,000



37	<b>TEDDY, MINT</b> 1969/10  FABRIC TYPE - SHEERLING CONTENT - PILE: ALPACA 45, WOOL 25, COTTON 14 GROUND: LINEN 100  DESIGNER - GRADE - D ABRASION - 55,000	38	<b>SKYE WOOL, MINT</b> 2017118/303  FABRIC TYPE - WOOL CONTENT - WOOL 70, POLYESTER 20, NYLON 5  DESIGNER - GRADE - A ABRASION - 100,000+	39	<b>CHIC, HARMONY</b> K2351/4  FABRIC TYPE - CONTENT - COTTON 37, ALPACA 18, MOHAIR 18, WOOL 15, NYLON 12  DESIGNER - DOROTHY COSONAS GRADE - C ABRASION - 20,000
40	<b>SKYE WOOL, SPROUT</b> 2017118/3  FABRIC TYPE - WOOL CONTENT - WOOL 70, POLYESTER 20, NYLON 5  DESIGNER - GRADE - A ABRASION - 100,000+	41	<b>JEFFERSON WOOL, BOTTLE</b> 34397/53  FABRIC TYPE - WOOL CONTENT - WOOL 70, POLYESTER 20, NYLON 5, ACRYLIC 5  DESIGNER - GRADE - A ABRASION - 100,000+	42	<b>TYRONE, HERBAL GREEN</b> F3645/002  FABRIC TYPE - WOVEN CONTENT - VIRGIN WOOL 100  DESIGNER - GRADE - D ABRASION - 35,000
43	<b>SAVOY SUITING, HUNTER</b> 35204/3030  FABRIC TYPE - WOOL CONTENT - WOOL 80, POLYAMIDE 20  DESIGNER - DAVID PHOENIX GRADE - B ABRASION - 80,000	44	<b>MIES, JARDIN</b> 71360/024  FABRIC TYPE - BOUCLÉ CONTENT - COTTON 32, WOOL 30, VISCOSE 18, LINEN 16  DESIGNER - GRADE - C ABRASION - 30,000	45	<b>ETERNAL, FOREST</b> LZ30219/23  FABRIC TYPE - VELVET CONTENT - COTTON 100  DESIGNER - GRADE - B ABRASION - 150,000
46	<b>VLADIMIRO, SOUFRE</b> T21038/027  FABRIC TYPE - MOHAIR CONTENT - PILE: KID MOHAIR 100 GROUND: MOHAIR 62, COTTON 38  DESIGNER - GRADE - D ABRASION - 80,000	47	<b>SKYE WOOL, GOLDENROD</b> 2017118/4  FABRIC TYPE - WOOL CONTENT - WOOL 70, POLYESTER 20, NYLON 5  DESIGNER - GRADE - A ABRASION - 100,000+	48	<b>TAKE DIRECTION, MUSTARD</b> 4800/32  FABRIC TYPE - MOHAIR CONTENT - PILE: MOHAIR 100 GROUND: MOHAIR 50, COTTON 50  DESIGNER - GRADE - D ABRASION - 25,000
49	<b>NAGANO, KABOCHA</b> 9975/08  FABRIC TYPE - BOUCLÉ CONTENT - WOOL 28, POLYESTER 27, ACRYLIC 24, COTTON 18, NYLON 5  DESIGNER - GRADE - C ABRASION - 45,000	50	<b>BAIKAL, HONEY</b> 10949/35  FABRIC TYPE - BOUCLÉ CONTENT - WOOL 70, POLYESTER 25, COTTON 5  DESIGNER - GRADE - D ABRASION - 50,000	51	<b>SWEET HEART, FAUVE</b> 71274/003  FABRIC TYPE - CONTENT - COTTON 27, WOOL 24, ALPACA 15, POLYAMIDE 15, SILK 10, POLYESTER 9  DESIGNER - GRADE - SPECIALTY ABRASION - 50,000
52	<b>SMART, AMBER</b> 36076/4  FABRIC TYPE - CONTENT - POLYESTER 62, COTTON 38  DESIGNER - GRADE - A ABRASION - 51,000	53	<b>CHIC, BITTERSWEET</b> K2351/3  FABRIC TYPE - CONTENT - COTTON 37, ALPACA 18, MOHAIR 18, WOOL 15, NYLON 12  DESIGNER - DOROTHY COSONAS GRADE - C ABRASION - 20,000	54	<b>BURLINGTON, ROSE</b> FL010052/007  FABRIC TYPE - VELVET CONTENT - COTTON 100  DESIGNER - GRADE - C ABRASION - 150,000



55	<b>LUIGI, FRAISE</b> 16576/006  FABRIC TYPE - VELVET CONTENT - POLYESTER 100  DESIGNER - GRADE - C ABRASION - 100,000+	56	<b>GEMMA, CARMINE</b> 466568/011  FABRIC TYPE - WOOL CONTENT - WOOL 85, NYLON 15  DESIGNER - SANDER LAK GRADE - A ABRASION - 100,000	57	<b>CLASSIC BOUCLÉ, CAYENNE</b> K162/7  FABRIC TYPE - BOUCLÉ CONTENT - WOOL 25, NYLON 48  DESIGNER - GRADE - B ABRASION - 40,000
58	<b>JEFFERSON WOOL, MAPLE</b> 34397/24  FABRIC TYPE - WOOL CONTENT - WOOL 70, POLYESTER 20, NYLON 5, ACRYLIC 5  DESIGNER - GRADE - A ABRASION - 100,000+	59	<b>AMORE, LUST</b> K2080/3  FABRIC TYPE - VELVET CONTENT - COTTON 100  DESIGNER - GRADE - C ABRASION - 100,000+	60	<b>TYRONE, SALMON BROWN</b> F3645/003  FABRIC TYPE - WOVEN CONTENT - VIRGIN WOOL 100  DESIGNER - GRADE - D ABRASION - 35,000
61	<b>TELLUS, BLUSH</b> GWF-3764/7  FABRIC TYPE - WOVEN CONTENT - POLYACRYLIC 45, VISCOSE 30, POLYESTER 15, COTTON 10  DESIGNER - KELLY WEARSTLER GRADE - B ABRASION - 30,000	62	<b>LIMANI, AMBER</b> K2079/4  FABRIC TYPE - MOHAIR CONTENT - PILE: MOHAIR 100 GROUND: COTTON 100  DESIGNER - GRADE - D ABRASION - 100,000	63	<b>CHEVALIER WOOL, BURNT SIENNA</b> 8013149/124  FABRIC TYPE - WOOL CONTENT - WOOL 80, POLYAMIDE 20  DESIGNER - GRADE - B ABRASION - 80,000
64	<b>GRAFFITO, SALMON &amp; CREAM</b> GWF-3530/117  FABRIC TYPE - PRINTED CONTENT - COTTON 52, LINEN 48  DESIGNER - KELLY WEARSTLER GRADE - B ABRASION -	65	<b>MANIFESTO FUTURISTA, CUIVRE</b> T17030/001  FABRIC TYPE - JACQUARD CONTENT - POLYESTER 80, COTTON 20  DESIGNER - GRADE - D ABRASION -	66	<b>SANSONE, HAVANE</b> SANSON/003  FABRIC TYPE - VELVET CONTENT - POLYESTER 100  DESIGNER - GRADE - C ABRASION - 30,000+
67	<b>ESKER WEAVE, SORBET &amp; STONE</b> GWF-3759/217  FABRIC TYPE - WOVEN CONTENT - LINEN 38, VISCOSE 29, COT- TON 22, ACRYLIC 7, NYLON 4  DESIGNER - KELLY WEARSTLER GRADE - B ABRASION -	68	<b>TYRONE, ROUGE</b> F3645/004  FABRIC TYPE - WOVEN CONTENT - VIRGIN WOOL 100  DESIGNER - GRADE - D ABRASION - 35,000	69	<b>LUIGI, CERISE</b> 16576/007  FABRIC TYPE - VELVET CONTENT - POLYESTER 100  DESIGNER - GRADE - C ABRASION - 100,000+
70	<b>GEMMA, EARNEST</b> 466568/009  FABRIC TYPE - WOOL CONTENT - WOOL 85, NYLON 15  DESIGNER - SANDER LAK GRADE - A ABRASION - 100,000	71	<b>IMPRINT, CARMINE</b> K2333/5  FABRIC TYPE - JACQUARD CONTENT - POLYESTER 79, COTTON 21  DESIGNER - GRADE - B ABRASION - 100,000	72	<b>PRINCE HAIRY, BURGUNDY</b> K2237/3  FABRIC TYPE - CONTENT - WOOL 47, MOHAIR 20, AL- PACA 19, POLYAMID 14  DESIGNER - GRADE - C ABRASION - 15,000



73	<b>TAKE DIRECTION, DEEP RASPBERRY</b> 4800/28  FABRIC TYPE - MOHAIR CONTENT - PILE: MOHAIR 100 GROUND: MOHAIR 50, COTTON 50   DESIGNER - GRADE - D ABRASION - 25,000	74	<b>TARA, DAMSON</b> F3646/008  FABRIC TYPE - WOVEN CONTENT - VIRGIN WOOL 100   DESIGNER - GRADE - D ABRASION - 40,000	75	<b>CALAIS, GARNET</b> K787/175  FABRIC TYPE - VELVET CONTENT - PILE: COTTON 100 GROUND: COTTON 88, RAYON 12   DESIGNER - GRADE - B ABRASION - 30,000
76	<b>ALVAR, LAVENDER</b> F0753/42-CAC  FABRIC TYPE - VELVET CONTENT - POLYESTER 100   DESIGNER - GRADE - A ABRASION - 180,000+	77	<b>COUTURE, LAVENDER</b> 33127/10  FABRIC TYPE - WOOL CONTENT - WOOL 80, POLYAMIDE 20   DESIGNER - GRADE - B ABRASION - 90,000	78	<b>CHEVALIER WOOL, VIOLET</b> 8013149/1010  FABRIC TYPE - WOOL CONTENT - WOOL 80, POLYAMIDE 20   DESIGNER - GRADE - B ABRASION - 80,000
79	<b>DUCHESS, LYNX</b> K1209/5  FABRIC TYPE - BOUCLÉ CONTENT - COTTON 57, WOOL 25, ACRYLIC 18   DESIGNER - DOROTHY COSONAS GRADE - C ABRASION -	80	<b>SKYE WOOL, AUBERGINE</b> 2017118/1010  FABRIC TYPE - WOOL CONTENT - WOOL 70, POLYESTER 20, NYLON 5   DESIGNER - GRADE - A ABRASION - 100,000+	81	<b>SEURAT, CIRCUS</b> K2151/5  FABRIC TYPE - WOVEN CONTENT - COTTON 59, WOOL 24, NYLON 10, POLYESTER 7   DESIGNER - GRADE - B ABRASION - 95,000
82	<b>ALL STAR, PLUM</b> K2209/2  FABRIC TYPE - PRINTED CONTENT - POLYESTER 70, LINEN 30   DESIGNER - GRADE - B ABRASION - 60,000				